

E. 116th Station

GREATER CLEVELAND REGIONAL TRANSIT AUTHORITY

REQUEST FOR QUALIFICATIONS • PUBLIC ART • E. 116TH RAPID TRANSIT STATION



RTA E. 116th Rapid Transit Station – Public Art – Request for Qualifications

PROJECT DESCRIPTION

Greater Cleveland Regional Transit Authority (GCRTA) in partnership with LAND studio is seeking qualifications from artists and designers who show an ability to design 2-D and 3-D gateway elements as part of GCRTA's Arts in Transit Program for the upcoming E. 116th Station redevelopment project. The gateway elements will highlight the new station's entrances and create a positive outward experience for riders and passersby. Those gateway locations are identified in the attached renderings of the new station.

NEIGHBORHOOD CONTEXT

The Buckeye Shaker area is located on the East Side of Cleveland, Ohio. It encompasses the historic Buckeye, Larchmere, Woodland Hills and Shaker Square neighborhoods. Anchored by an historic shopping district and an eponymous rapid transit station, located at the intersection of Shaker and Moreland Boulevards, on the light rail line that connects the city of Shaker Heights to downtown Cleveland. From the early- to mid-20th century, the Buckeye Road neighborhood was known as Little Hungary, serving as the historic heart of Cleveland's Hungarian community, which at one time was the largest in the world outside of Budapest. Buckeye Shaker is bordered by the neighborhoods of Woodland Hills on its west, Mount Pleasant to the south, University Circle to the north, and the suburb of Shaker Heights to the east. Today, the neighborhood is a predominantly African American, working-class community that has been dealing with a great deal of vacated and abandoned housing issues but has many opportunities for redevelopment within the area. It is a strong neighborhood and cares about the arts and their place in capturing its identity.

Artists/designers interested in the project will be expected to immerse themselves in the neighborhood's history and future aspirations. Some resources include: [Buckeye Shaker Square Development Corporation](#), [Sidewalks of Buckeye](#), [Shaker Square](#), [Larchmere Boulevard](#).

ELEGIBILITY

The call is open to U.S. artists and designers who are 18 years of age or older. Experienced public artists are encouraged to apply, but previous experience in public art is not required. Artists and designers should be able to demonstrate an ability to design and/or create 3-dimensional works of art.

LOCATION

The artwork will be implemented in close proximity to the entrances of the station (on E. 116th and on Shaker Blvd.) and can be integrated into certain existing elements of the station, i.e. walls, fencing, archways, etc. (Please see attached)

REQUIREMENTS

Interested artists and designers should send the following to ilanzilotta@land-studio.org and Artsintransit@gcrt.org (216) 621-5413 x129:

1. Brief Cover Letter describing their qualifications and interest in the project. Include contact person's name and contact info
2. A link to online portfolio or image sheet with no less than 6 and no greater than 12 images of previous or relevant work labeled with location and date.
3. Current resume or CV

PROCESS

Artists and designers will submit qualifications. From the submissions, a smaller number of artists will be selected by committee and given a stipend to develop concepts for the site. From those selected artists, one would be chosen to further develop and implement their concept.

The artists identified should be experienced public artists with a demonstrated ability to work within a larger, complex capital project. They may be local and/or national. Recommended artists will have experience with community engagement and the ability to develop artwork that is relevant and connected to the community in which it is located.

CONSIDERATIONS

The artist whose work is chosen for implementation may be required to make changes or refinements to their designs. This design-development phase is typical of public art projects.

Artists will be compensated for work undertaken in the design-development phase, and funding is also in place to cover the cost of digitizing the artwork and providing graphic-design assistance. It is understood that many artists do not have the capability to produce the final artwork in the digital form necessary for production. In such cases, assistance will be provided in pairing the artist with a professional capable of digitizing and fabricating the artwork.

Finalists chosen to present concepts will be asked to provide the following in their presentations:

1. Design Concepts detailing scale, materials, and function
2. Budget: Including design fees, material costs, fabrication and installation costs, engineering fees, travel costs for approximately 2 visits, and any other relevant costs associated with the concept
3. Other potential partners: fabricators, suppliers, and contractors.

Artists will contract with RTA to deliver the final artwork to be installed onsite in the fall of 2017. Schedule is subject to changes based on RTA's construction schedule. The artist will be notified of any changes to the schedule in advance.

SELECTION COMMITTEE

A selection committee comprised of art and design professionals and community stakeholders will review submissions and select up to three finalists to develop proposals for this project. Finalists will be encouraged to visit the site and meet with project representatives to develop an understanding of the project's goals and settings.

All finalists will be expected to present their concept in person to the selection committee at a date to be determined in coordination with GCRTA and its project partners.

AWARDS

Three finalists will be given a stipend of \$2000 to develop and present concepts to the committee. One artist whose work is chosen for implementation will be further compensated and provided with assistance, as needed, in the design-development process. Design fees for implementation will be identified by the artist in the overall project budget. Travel and lodging expenses for out-of-town artists will be coordinated by GCRTA and LAND studio.

GCRTA will execute a Public Art contract with the selected artist. LAND studio will coordinate detailed art design, fabrication, and installation issues.

PROJECT BUDGET

\$47,000 Total: Includes design fees, material costs, fabrication and installation costs, engineering fees, travel costs for approximately 2 visits, and any other relevant costs associated with the concept.

For additional questions, please contact Joe Lanzilotta at jlanzilotta@land-studio.org or (216) 621-5413 x129

Project made possible with funding support from the National Endowment for the Arts, the St. Luke's Foundation, Cleveland Neighborhood Progress, Greater Cleveland Regional Transit Authority, and LAND studio.

SCHEDULE & DEADLINE FOR SUBMISSION

The deadline for submission is **Friday, January 29th by 4:00PM**

Materials submitted after the deadline will not be considered.

Expected date of station completion is **fall of 2017**. Artwork must be completed and prepared for installation by **fall of 2017**.

ABOUT THE GREATER CLEVELAND REGIONAL TRANSIT AUTHORITY (GCRTA)

GCRTA's mission is to provide safe, reliable, clean and courteous public transportation.

RTA's Values:

Safety: The safety of our passengers, our employees and the general public is always our top priority.

Ethics and Integrity: We are dedicated to the highest ethical standards, including uncompromising honesty and integrity in our daily activities.

Service Excellence: We will provide safe, clean, reliable, on-time, courteous service that our customers and the community will view as outstanding.

Fiscal Responsibility: We are committed to manage every taxpayer and customer-generated dollar as if it were coming from our own pocket.

Teamwork: We believe in teamwork and will foster a spirit of cooperative effort within RTA and with our partners.

Responsibility and Accountability: Every individual is accountable. Meeting our individual responsibilities will ensure that collectively, RTA is a high-performing organization. We will meet all regulations and commitments and continually strive to improve.

Respect: We will treat all members of the RTA family, our customers and the general public with dignity and respect.

Photos of arts and culture already existing within the Buckeye community



E. 116th Station

Public Art Opportunities

Prepared by **LAND studio** for **Greater Cleveland Regional Transit Authority**
in Partnership with **City Architecture** and **Cleveland Neighborhood Progress**.

Current Conditions



Proposed Conditions



View from above E. 116th Street looking south-west across the station.



View from above the south-west of station looking north-east across the station.

Proposed Conditions



View from above Shaker Boulevard North looking south-east.



View from above Shaker Boulevard South looking north-east at the station.

Proposed Conditions



View from Shaker Boulevard North looking south-east at Mews Entrance.



View from inside the Mews Entrance looking east down Mews Walkway.

Proposed Conditions

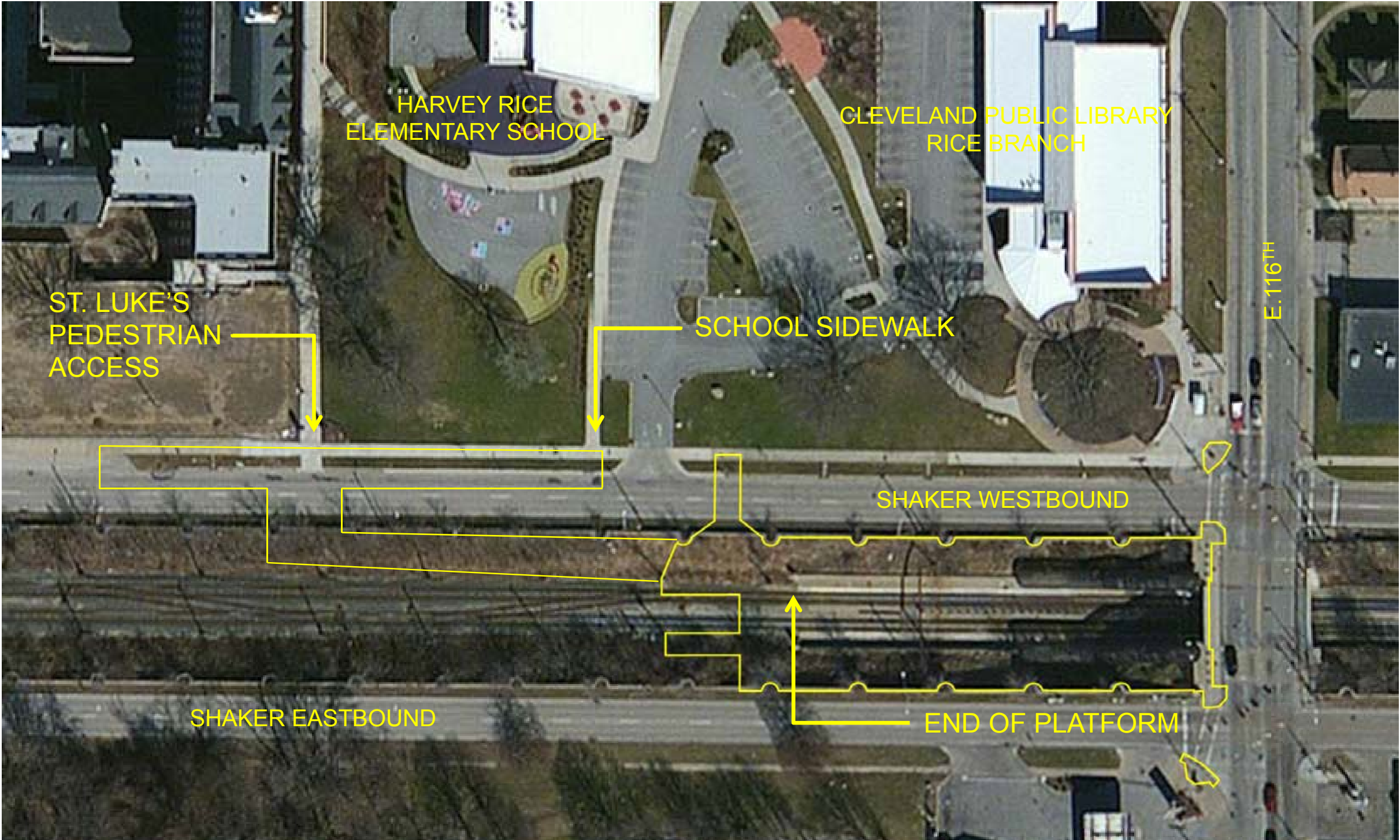


View from north-west (Mews Walkway) looking east toward platforms.

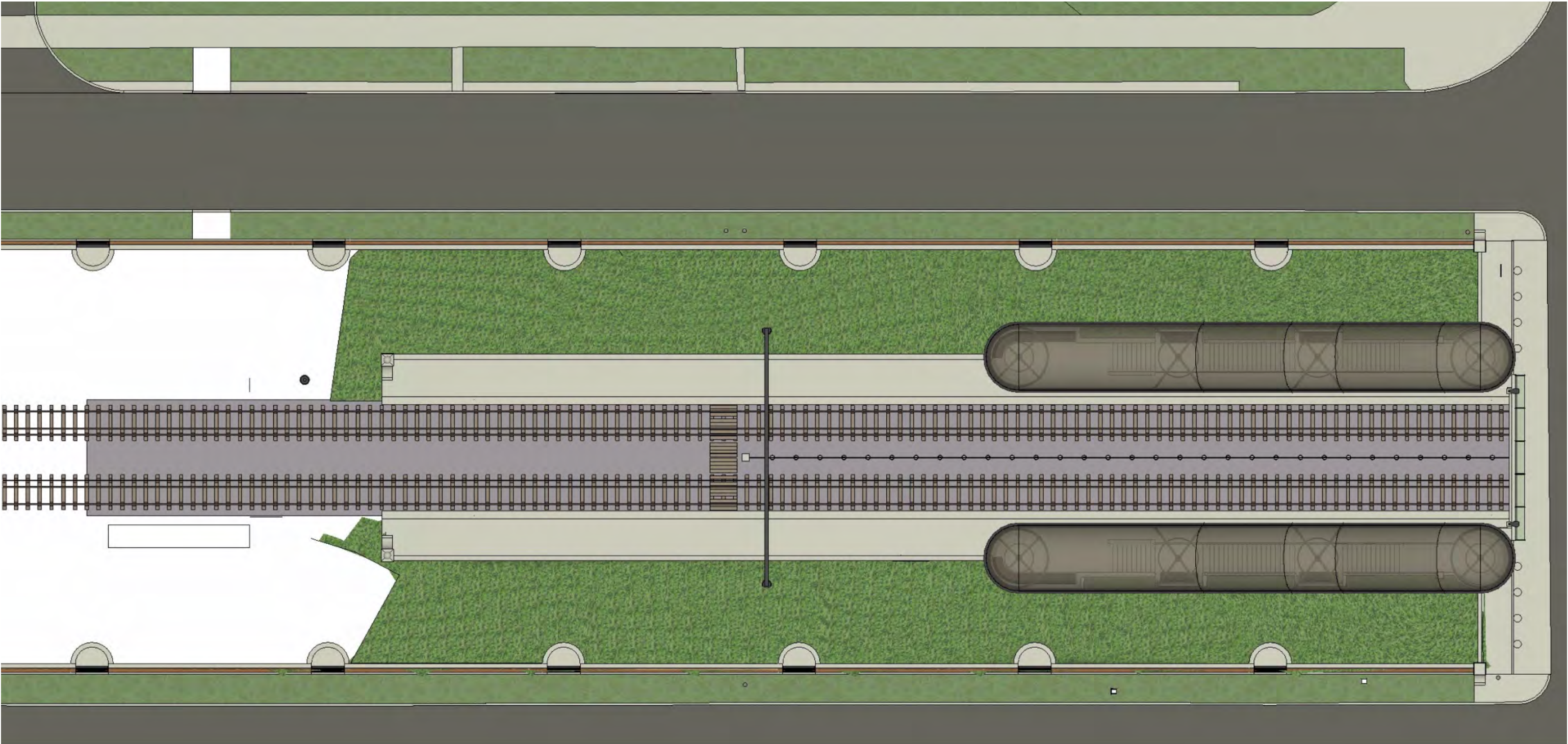


View from southern walkway pull-offs looking north-west across tracks at Mews Walkway.

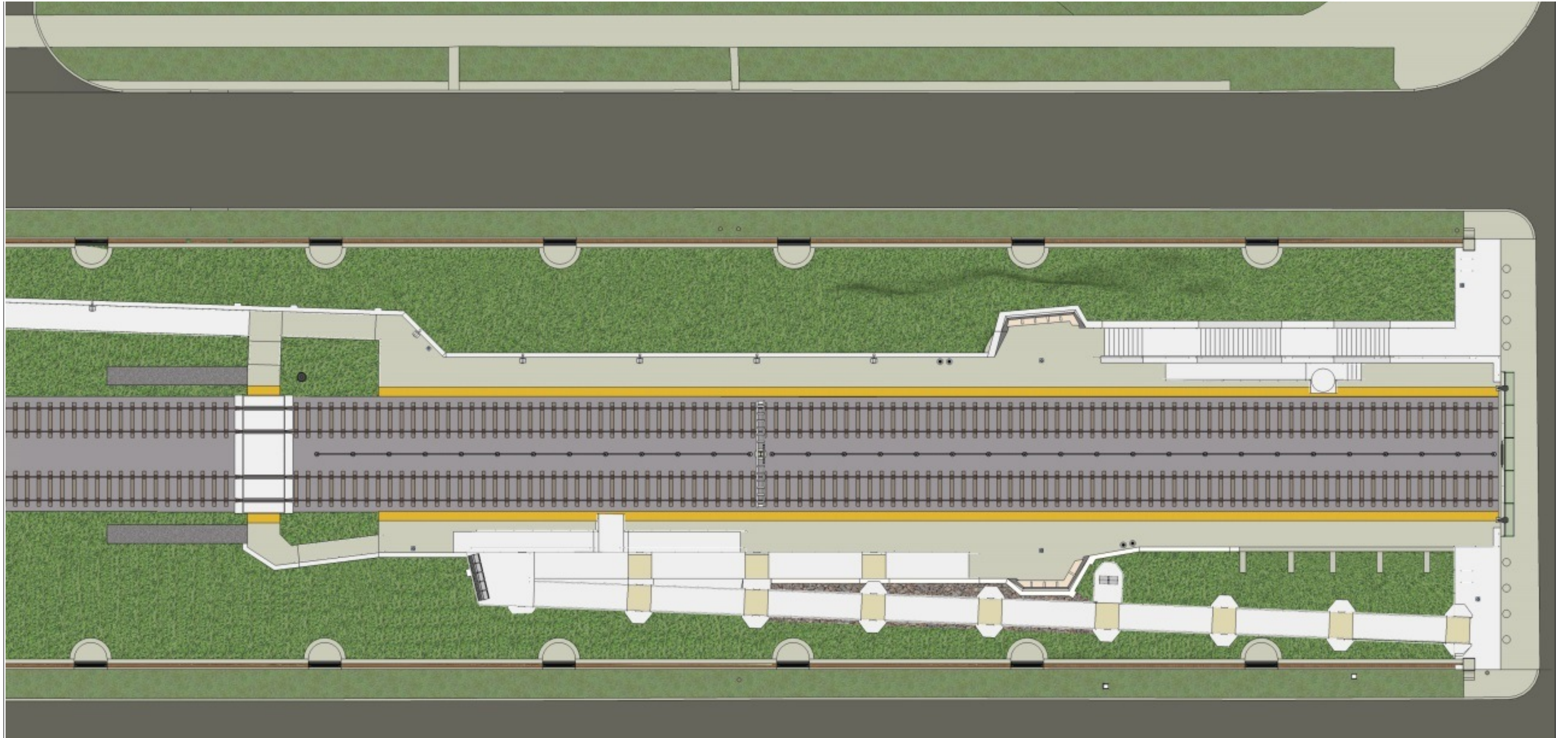
Current Conditions Aerial with Adjacent Properties



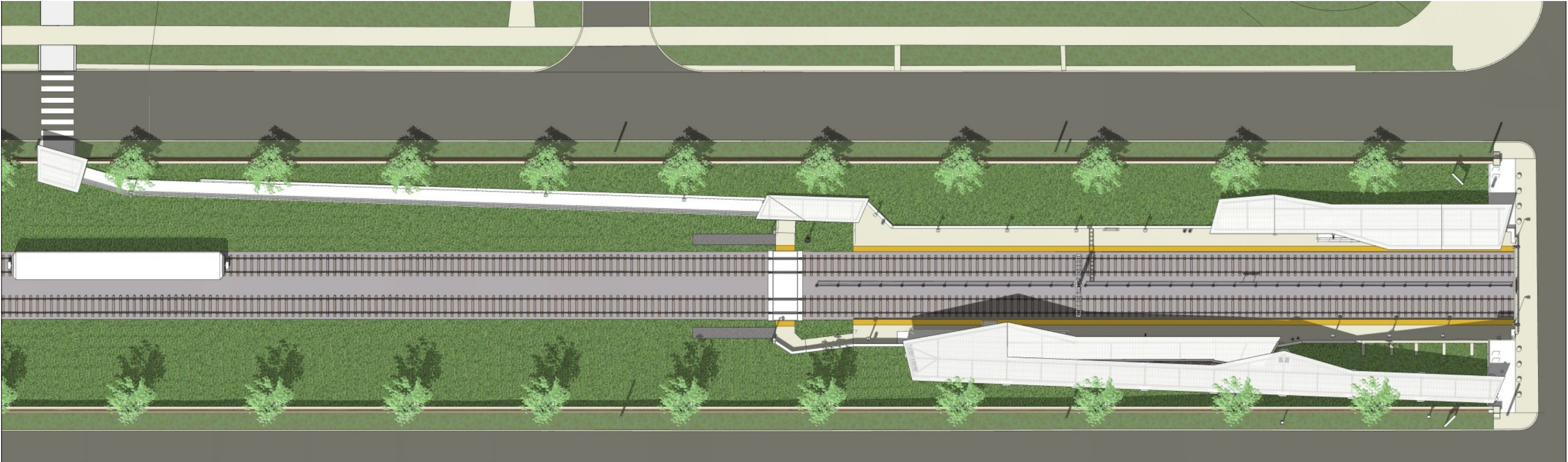
Current Rendering Aerial



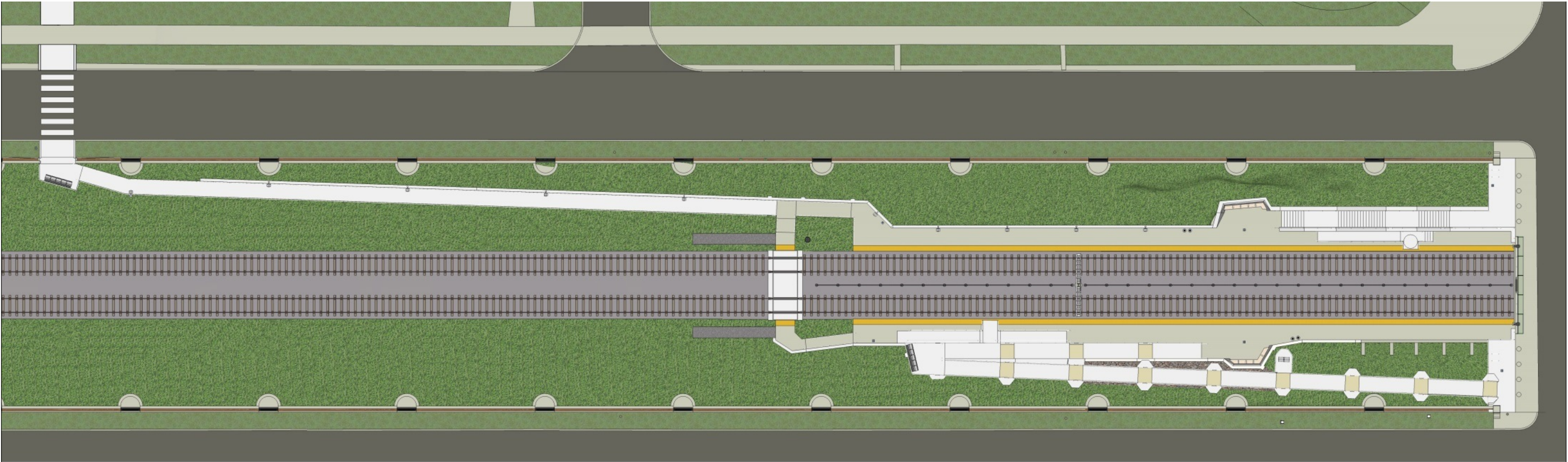
Proposed Rendering Aerial Zoomed without Canopy



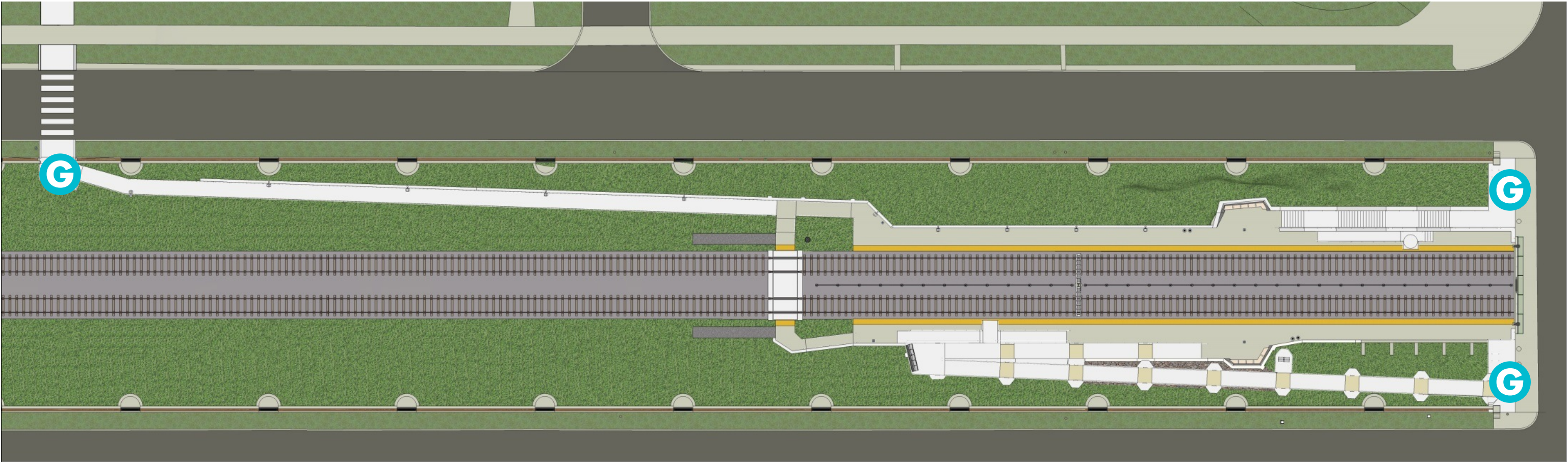
Proposed Rendering Aerial with Canopy



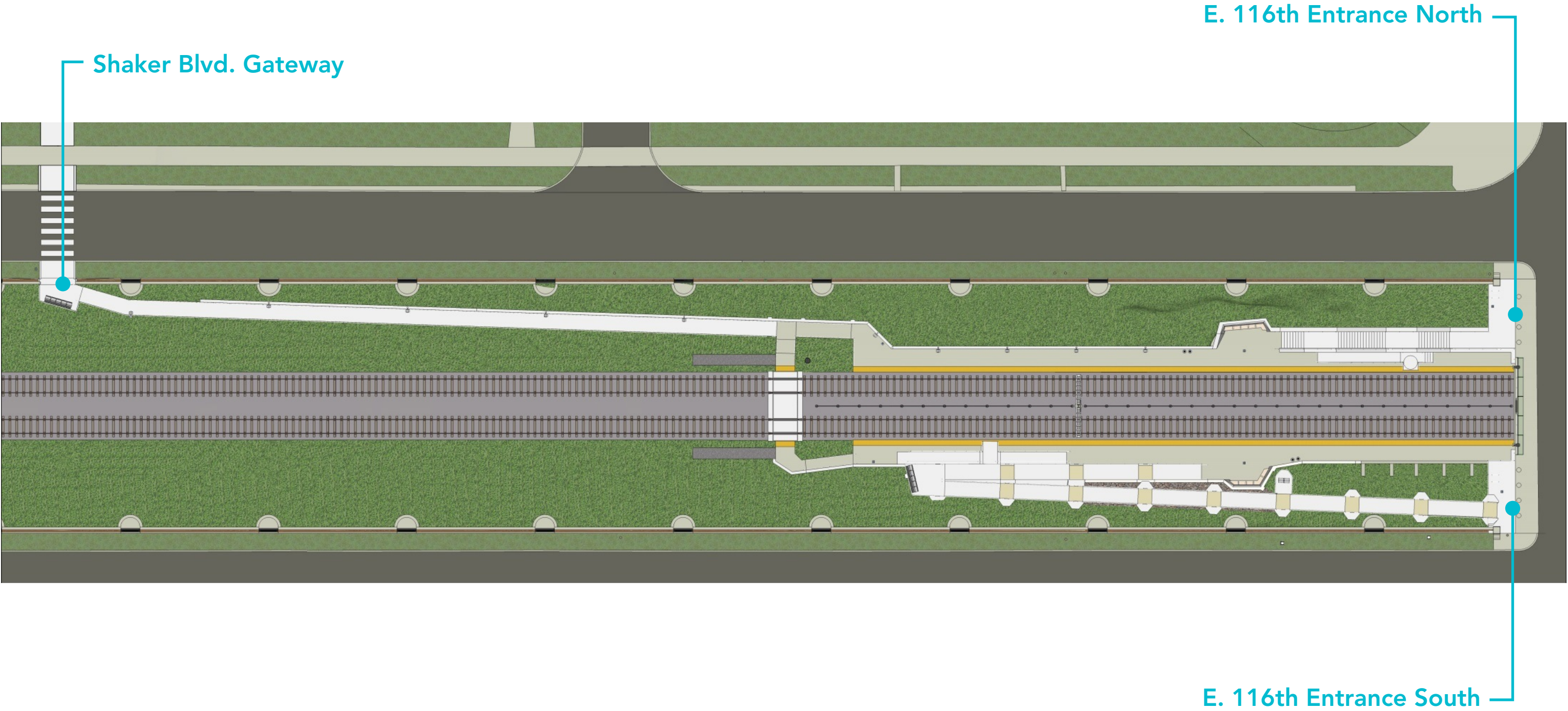
Proposed Rendering Aerial without Canopy



Potential Artwork Locations



Location Descriptions



Gateways : Locations

E. 116th Entrance South

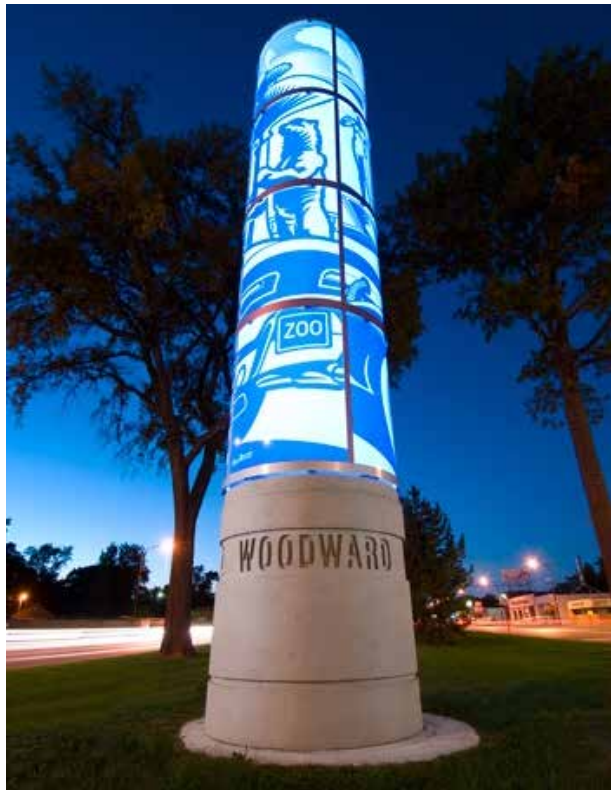
E. 116th Entrance North

Shaker Blvd. Gateway



Gateway locations could include north and south entrances and the bridge wall at E. 116th, as well as the north entrance at Shaker Boulevard. Treatments could include but are not limited to signage and wayfinding, lighting, surface paintings or wraps, and sculptural elements.

Gateways : Precedents + Inspiration



THANKS!

GREATER CLEVELAND REGIONAL TRANSIT AUTHORITY

REQUEST FOR QUALIFICATIONS • PUBLIC ART • E. 116TH RAPID TRANSIT STATION

Produced by LAND Studio in Partnership with

